

# Connecting the Dots

*Streamline your business processes and delivery your projects on Time, within a Budget, and at the requested Scope and Quality level. Get higher ROI.*



## Project Management

an essential part of every successful leader's portfolio

### Connecting the Pieces 1

### Who We Are? 2

### Why Us? 3

### Our Mission 4

### Consulting 5

### The Situation 6

### The Solutions 7

### Training 8

### Contact Us 8

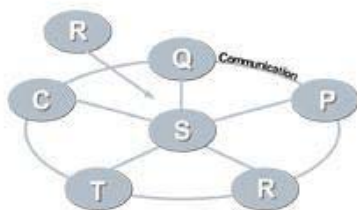
The concept behind **Project Management** is applied to such diverse industries and organizations (profit and not for profit), such as manufacturing, defense, construction, information technology, healthcare and etc. The main objective is to help organizations deliver **quality** products and services on **time** and within **budget** parameters. In today's global environment, with carefully defined budgets and tense schedules, having project management **skills** is a **critical** value for every organization.

Based on the PMI survey, 74% of all projects fail. This causes huge losses and a lot of frustration for corporations. The corporate world needs resources that

will be able to successfully manage projects. Such resources are qualified and trained project managers.

Develop skills that will help you to start and manage your projects, and successfully deliver required outputs, within given schedules and budgets.

**Apply tools and techniques that will "put the project in control" and provide higher ROI.**



# eConsulting Group, Inc.™

## Who We Are?

For the last six years, eConsulting Group™, Inc. has successfully provided the **Hands-On Project Management™** consulting and training services to more than six hundred clients, including Fortune 5 and Fortune 500 companies. We have developed **Enterprise Project Management Workflow and Analysis©** method which main purpose is development and support of the project management office within an organization. This method is a backbone of our software application **ePMO.net®**.

### Product and Services

**Consulting** - Enterprise Project and Program Management

**Assessment and Alignment** - PMO, Strategic Planning, Six Sigma, and IT.

**Training** - Hands-On Project Management™, Six Sigma, Business Analysis and IT Security.

**Certifications** - PMP® and Project Management Expert™.

**Products** - ePMO.net®, Training Materials, Test Modules/Software, Online Courses.

Training Courses	Duration	PDUs
<b>PMP® Certification Preparation</b>	<b>40 hours</b>	<b>35</b>
<b>Courses</b>		
<b>On Line</b>		
BA1E00 - Business Analyst	20	20
PM1E00 - Introduction to Project Management	20	20
PM2E00 - Advanced Project Management	20	20
PM4E00 - IT Project Management	15	15
PM5E01 - "Hands-On Project Management™" – Fast Track	30	30
PM7E00 - Construction Project Management	55	55
<b>On Site</b>		
BA1000 - Business Analyst	24	21
PM1000 - Introduction to Project Management	40	35
PM2000 - Advanced Project Management	40	35
PM2001 - Schedule and Cost Management	16	14
PM2002 - Risk Management	8	7
PM2003 - Resources and Communication Management	8	7
PM2004 - Leadership	8	7
PM2005 - Contract Management	8	7
PM2006 - Quality Management	8	7
PM3000 - Project Management IS - MS Project 2002/2003	24	21
PM4000 - IT Project Management	24	21
<b>PM5001 - "Hands-On Project Management™" – Fast Track</b>	<b>40</b>	<b>35</b>
PM5003 - Project Management Best Practices and Methods	80	70
PM5004 - PMP® Certification Preparation - Full Track	100	87
<b>PM5005 - PMP® Prep Course - Fast Track</b>	<b>24</b>	<b>21</b>
PM6000 - Enterprise Project Management	16	14
PM6001 - Project Portfolio Management and PMO	16	14
PM6002 - Critical Chain	8	7
PM6003 - Project Finance and Analysis	8	7
PM7000 - Construction Project Management	52	55
PM8000 - Six Sigma (Black Belt and Green Belt)	72	63

# Why eConsulting Group™, Inc.?

eConsulting Group™, Inc. has gained respect from customers by providing them with the solutions that work and by assisting them to reach the higher levels of efficiency. Our work is dedicated to the development and deployment of management and decision making methods, tools and techniques.

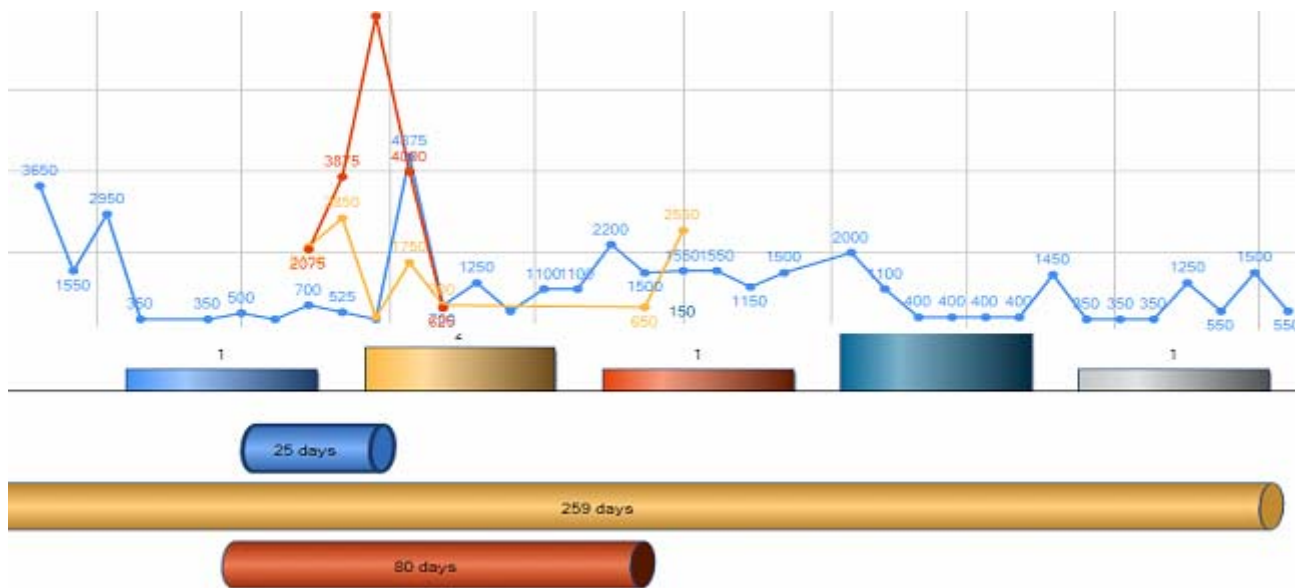
## How does it apply to you?

- **Dedication** - Your success is our success.
- **Knowledge** - Our consultants are experts in the field of management consulting.
- **Innovation** - We transfer your challenge into an innovation and a solution.
- **Partnership** - We work for you as your partner, not as a contractor.
- **Improvement** - Our objective is a long term partnership and continuous improvement.

**Majority of the problems within your projects are direct result of poor communication.**

### Partners:

Project Management Institute  
 American Quality Association  
 International Quality Federation  
 National-Louis University  
 Minitab, Inc.  
 Illinois Workforce Development



## Our Mission

eConsulting Group™, Inc. wants to establish your company as a successful performer within the industry by providing you with the project management tools and techniques to achieve that goal.

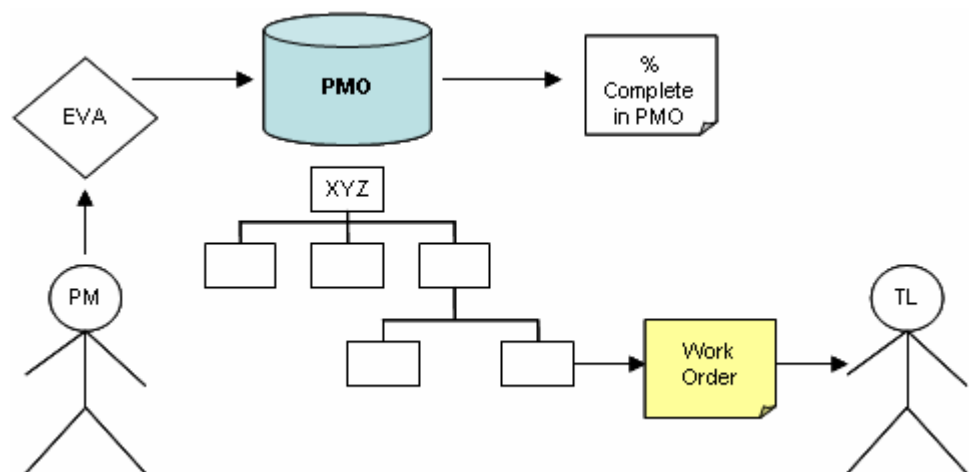
Our **vision** is to become a Global leader in management consulting.

Our **mission** is to:

- 1. Have a positive, long term, impact on our clients, and
- 2. Continuously improve our operation.

**All efforts within a company should support the company' strategic objectives.**

**Everything else is Non-Value Added.**





## The Situation

Related efforts within an organization that create an output are called **project**. A group of related projects are called **program**.

Utilizing right tools and techniques to manage those projects is a business **imperative** for the corporations that want to survive harsh market conditions and expand.

How many projects are you running at this very moment within your company or department?

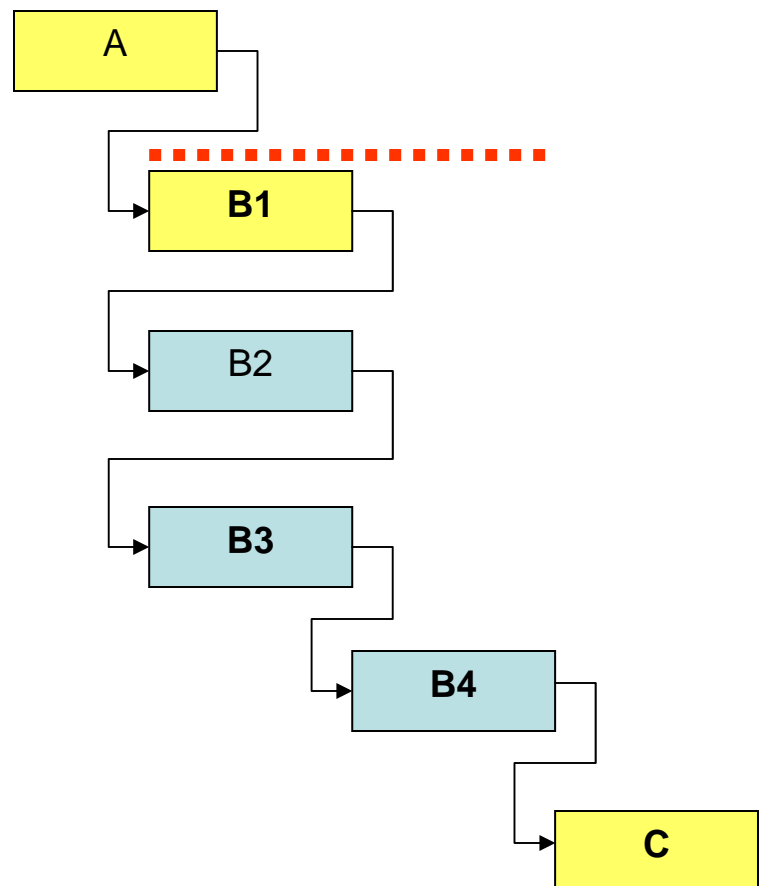
How many of those support **strategic objectives** of your company? To answer these questions you need **project prioritization and alignment**.

Trying to push more work through already **clogged capacities** in order to catch up with the customer' demand is not a solution. You need **resources allocation**.

Running the projects without defined and controlled budgets would not keep the business for very long. You need **budget allocation**.

**Poor scope definition and scope creep** would lead toward poor quality of the output. You need **change management procedure**.

Ad hoc project management practices lead to Chaos Management.



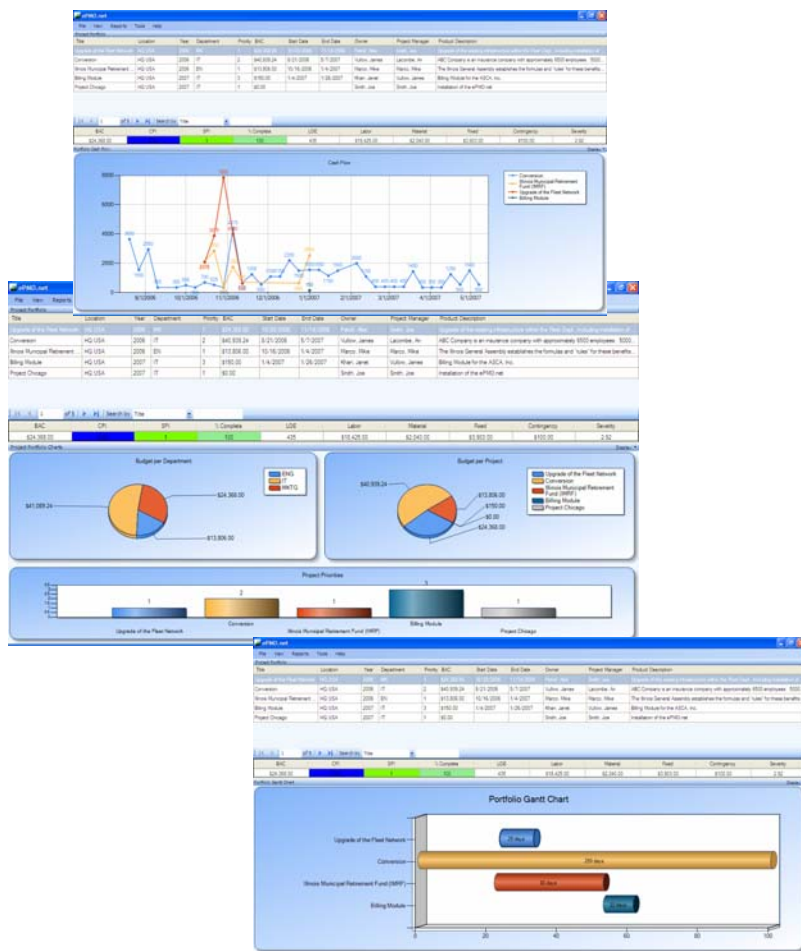
# The Solution

**eConsulting Group, Inc.** has been focused on development and deployment of (PMM) Project Management Methodologies in order to support our clients in achieving their objectives to deliver high quality products/services, on- time, within budget, while using fewer resources. Quality, Time, Cost, and Resources are parameters, which determine the outcome of your project. It is crucial, that you and your company use tools and techniques that will help you organize, plan, manage, control, and collaborate these parameters in order to gain competitive advantage, increase your market share and profitability, and secure growth.

**eConsulting Group, Inc.** will assess your organization’s maturity level by applying maturity model and standard, established by Project Management Institute - PMI® and recommend the best practice for your organization.

## Steps toward Project Management Office

1. **Scope**
2. **Assessment**
3. **Training**
4. **Test Drive**
5. **Deployment**
6. **Utilization**
7. **Optimization**
8. **Continuous Improvement**



## Training



eConsulting Group™, Inc.  
405 North Wabash Avenue #1712  
Chicago, IL 60611  
USA

Phone: 312.804.9992

E-mail: [mmarco@eCGmn.com](mailto:mmarco@eCGmn.com)

Web: [www.eCGmn.com](http://www.eCGmn.com)

**eConsulting Group™, Inc.** has developed a training program, (“Hands-On Project Management™) which is designed for project management (PMP) professionals, functional managers, account managers, program and operations managers, coordinators, team leaders, engineers, and students. It provides material for managers at all levels; from those who want to begin using project management practices to those eager to refine their managerial skills.

The training program, “Hands-On Project Management™,” is in compliance with the Project Management Institute standards, which gave us a status of a Global Registered Education Provider.

---

**If you do not plan,  
then you plan to  
fail.**

**It is amazing that  
an organization  
would not put an  
effort to prevent a  
problem, but  
would put a huge  
effort to correct  
the situation  
caused by it.**

## Contact Us

If you would like to learn more about what we could do for your organization, please contact us by email at [mmarco@eCGmn.com](mailto:mmarco@eCGmn.com) or by phone at

**312.804.9992**

You could also visit our website at [www.eCGmn.com](http://www.eCGmn.com).



**Excellence in Management**